

## MEET THE DOCS



Kamal Kishore, MD  
*Retina Specialist and Surgeon  
Medical Director*

A skilled and extensively trained, board certified ophthalmologist and retina specialist, Dr. Kamal Kishore understands the complexity and delicacy of the eye and the importance of maintaining optimal eye health. He specializes in diseases and surgery of the retina, vitreous, and macula, including retinal tears and detachments, macular holes and pucker (wrinkle), diabetic retinopathy, age-related macular degeneration, and blockages in eye circulation.

Dr. Kishore entered medical school in 1980 at the age of 17 in New Delhi, India and completed six years training in ophthalmology before moving to the US in January 1992. He trained in internal medicine for two years at Nassau County Medical Center, NY prior to a residency in Ophthalmology at UMDNJ-NJ Medical School in Newark, NJ.

He completed his fellowship in vitreo-retinal surgery at Louisiana State University in June, 1999, while training with one of the best known surgeons in the world.

Dr. Kishore is a clinical assistant professor at the University of Illinois College of Medicine at Peoria. He has authored several scientific book chapters, numerous in peer reviewed ophthalmology journals, and has presented the results of his work at national and international meetings. He has received numerous awards throughout his career, including technovision award at the annual meeting of American Society of Retina Specialists (ASRS) for his surgical video in 2014. He is also recipient of Honor Award from ASRS in 2015.

Michael S. Grossman, MD  
*Comprehensive Ophthalmologist  
and Cataract Surgeon*

As a comprehensive ophthalmologist, Dr. Michael Grossman provides patients with a full range of eye care, including stitchless cataract surgery, glaucoma treatment, annual eye health exams, surgery for drooping eyelids, and the diagnosis and treatment of dry eyes and various other eye diseases.

He received his bachelor's degree in English Literature at Colorado College. Dr. Grossman received his medical degree from Emory University School of Medicine in Atlanta. After completing a surgical internship at the Medical University of South Carolina, Dr Grossman earned top honors during his ophthalmology residency at Tulane University School of Medicine in New Orleans in 2011.

Dr. Grossman holds professional memberships that include the American Academy of Ophthalmology and the American Society of Cataract and Refractive Surgery.

He often gives educational public lectures in the Peoria area, regarding cataracts, cataract surgery, and general eye health.

A native of Charleston, South Carolina, Dr. Grossman has three children and likes New Orleans jazz.

## OUR SERVICES

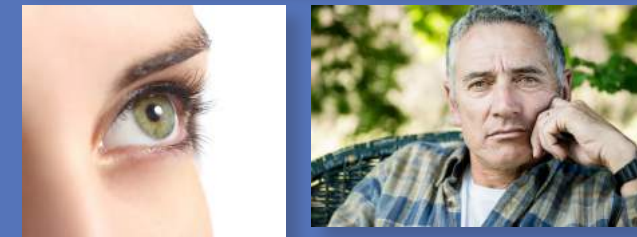
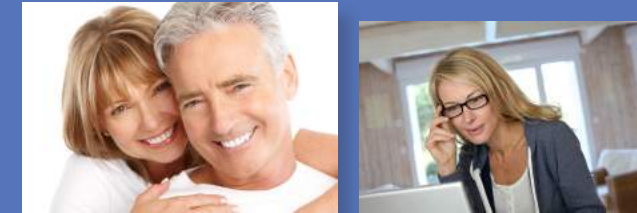
Utilizing the latest surgical techniques and the most sophisticated diagnostic equipment available, Illinois Retina and Eye Associates provides the following medical and surgical services for our patients:

- Stitchless Cataract Surgery-Including Multi-focal Lenses and Toric Implants for Astigmatism
- Routine Diabetic Eye Exams
- Glaucoma Management
- Eyelid Plastic Surgery/Blepharoplasty
- Comprehensive Eye Exams for Adults
- Retina Disease Management and Surgery for
  - Diabetic Eye Disease
  - Macular Degeneration
  - Retina Tears and Detachments
  - Injury or Previous Surgery

[www.illinoisretinaandeyeassociates.com](http://www.illinoisretinaandeyeassociates.com)



# Illinois Retina & Eye Associates



### Peoria

4505 N. Rockwood Dr., Ste. 1  
Tel: 309-589-1880 • Fax: 309-589-1885

### Peru

3602 Marquette Road  
Tel: 815-223-7400 • Fax: 815-223-7477

### Galesburg

3315 N. Seminary Street  
*(In the OSF Galesburg Clinic)*  
Tel: 877-223-7403 • Fax: 309-589-1885

### Dixon

1321 N. Galena Avenue  
Tel: 877-223-7403 • Fax: 815-223-7477

### Pekin

2611 Broadway Street  
Tel: 309-589-1880 • Fax: 309-589-1885

# WELCOME

Welcome to Illinois Retina & Eye Associates.

While our practice has grown over the years to meet the evolving needs of our communities, our guiding principle

is the same – to provide outstanding medical and surgical eye care with the highest ethical standards for all of our patients. Formerly known as Illinois Retina Institute, our physicians and staff thank you for placing your trust in us to meet your eye care needs.

## OUR PHYSICIANS AND STAFF

Our physicians are members of prestigious organizations, including:

- The American Academy of Ophthalmology
- The American Society of Retina Specialists
- The Association for Research in Vision and Ophthalmology
- The American Society of Cataract and Refractive Surgery
- Illinois State and Peoria County Medical Societies

Our experienced ancillary staff make a consistent effort in helping to make sure that your experience in our offices is as pleasant, comfortable, and educational as possible.

## AVAILABLE AT OUR OFFICES:

- Ultrasonography
- Digital fundus photography and angiography
- Spectral domain OCT
- Spacious waiting rooms
- Complimentary wifi

All our offices are connected by electronic health records.

## COMMITMENT TO RESEARCH & PATIENT EDUCATION

Our physicians actively participate in research to advance the treatment of eye diseases.

At Illinois Retina and Eye Associates, we invest in educating our staff to become ambassadors for our practice and for our patients.

We take pride in educating our patients and their families regarding their diagnosis with customized brochures, free lectures, and a comprehensive website. It is our belief that education is key in allowing our patients to learn what is happening with their eyes, procedures that may be performed, and what can be done at home to improve vision.

## DID YOU KNOW...

...that most visual disturbances are medical diagnoses and are covered by medical insurance? Illinois Retina and Eye Associates accepts Medicare assignment, most commercial and Medicare Advantage plans.

## DIRECTIONS TO ILLINOIS RETINA & EYE ASSOCIATES

### TO PEORIA:

*From the North (take Rt. 29 South)*

- Take Rt. 6 S Peoria, travel 7 miles
- Take War Memorial Dr. Exit 2, left off ramp
- Travel 3 miles, then right onto Sterling Ave.
- Right onto Scenic Dr. (at Red Lobster)
- Left onto Rockwood Dr.

*From the West (take I-74 East)*

- Take Sterling Ave. Exit 88 toward US-150
- Turn left onto N Sterling Ave.
- Turn left onto W James Baumann Way (If you reach W Scenic Dr. you are .2 miles too far)
- Right onto Rockwood Dr. Office is on the left

*From the East or South (take I-74 West)*

- Take Sterling Ave. Exit 88 right off ramp
- Take the first left W James Baumann Way. (If you reach W. Scenic Dr. you are .2 miles too far)
- Right onto Rockwood Dr. Office is on the left

### TO PERU:

*From the East or West (take I-80)*

- Take Rt. 251 South Exit 75
  - Left onto Wenzel Rd. (Mercedes Dealership)
  - Left onto Marquette Rd. (Social Security Office)
  - Left into Illinois Valley Professional Complex
- From the North or South (take I-39)*
- Take Rt. 251 North Exit 52, turn left off ramp, travel 6 miles
  - Right onto Wenzel Rd. (Mercedes dealership)
  - Left onto Marquette Rd. (Social Security Office)
  - Left into Illinois Valley Professional Complex

### TO DIXON:

*From the East or West (take I-88)*

- Take the IL-26 North exit toward Dixon
  - Merge onto S Galena Ave/ IL-26 toward Dixon
  - 1321 N. Galena on the Left (behind Culvers)
- From the North or South (take I-80)*
- Take the IL-26 North exit toward Dixon/ Princeton
  - Turn right onto N Main St/IL-26
  - 1321 N. Galena is on the left (behind Culvers)

### TO GALESBURG:

*From the East (take I-74 West)*

- Take Rt. 34W Monmouth Exit 46A
- Take Seminary St. Exit, turn right off ramp onto Seminary St.
- Right into the Galesburg Clinic

*From the North (take I-80 West)*

- Take I-74E exit, go 32 miles
- Take Rt. 34W Monmouth Exit 46A
- Take Seminary St. Exit, turn right off ramp onto Seminary St.
- Right into the Galesburg Clinic

*From the South (take Rt. 78 North)*

- Left onto Rt. 125 W
- Rt. 125 becomes Rt. 67N- continue
- Rt. 67 becomes Rt. 34E at Monmouth
- Travel 17 miles, take Seminary St. Exit, turn left off ramp onto Seminary St.
- Right into the Galesburg Clinic

### TO PEKIN:

*From the North or South (take Rt. 29)*

- Head SW on S Main St. towards Everett St.
- Turn onto Velde Drive (next to Velde Ford)
- Turn right on N Parkway Drive (at Lick Creek Golf Course)
- Turn left on Broadway St.
- Office will be on your left

*From the East (take Rt. 9 West)*

- Turn right on Co. Road 2100/Springfield Road (The first right after Tazewell Co. Animal Control)
- Turn left on Broadway St. (After O'Brien Cemetery)
- Office will be on the Right.

*From the West (US Rt. 24 East)*

- Turn Right on Rt. 9 East
- Continue onto Margaret St.
- Turn left on Broadway St. (Just after Monge Crouch & Mahoney)
- Office will be on the left.

## YOUR APPOINTMENT

Date \_\_\_\_\_ Time \_\_\_\_\_

Doctor \_\_\_\_\_ Location \_\_\_\_\_